

Professor Dan Kammen:

A Climate of Change

A range of clean energy options are now available to address climate change in California and worldwide but deployment is painfully slow. What can be done to accelerate the low carbon energy economy?



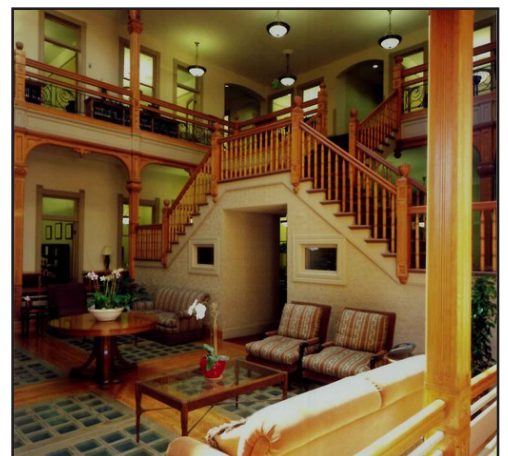
Dan Kammen is the Class of 1935 Distinguished Professor of Energy at UC Berkeley, with parallel appointments in the Energy and Resources Group, the Goldman School of Public Policy, and the department of Nuclear Engineering. He is the founding director of the Renewable and Appropriate Energy Laboratory (RAEL), Co-Director of the Berkeley Institute of the Environment, and Director of the Transportation Sustainability Research Center. Educated in physics at Cornell and Harvard, he held positions at CalTech, Harvard and Princeton before coming to Berkeley. Kammen is a coordinating lead author on various reports of the Intergovernmental Panel on Climate Change, which won the Nobel Peace Prize in 2007. He has appeared on 60 Minutes, Nova, Frontline, and hosted the six-part Discovery Channel series Ecopolis. He has testified before Congress and authored or co-authored 12 books, and numerous papers.

Hosted by Bruce Roberts ('68) and Hopkins & Carley

Saturday June 28th, 2014
10:30 a.m. - 1:00 p.m.

The Letitia Building

A San Jose Historic Landmark, The Letitia Building is a unique setting for our gathering. Built in 1889 by Caius T. Ryland, The Letitia was designed by San Jose architect Jacob Lenz and named after Ryland's wife, daughter of California's first governor.





Center on Civility & Democratic Engagement

GOLDMAN SCHOOL OF PUBLIC POLICY

Founded by the Class of 1968

Mission

Public dialogue often lacks civility and efforts toward policy consensus rarely enjoy broad democratic engagement. Today's hardened lines of political division threaten to aggravate and perpetuate social problems.

The Center on Civility & Democratic Engagement at UC Berkeley's Goldman School of Public Policy focuses on preparing current and future leaders to successfully engage people of diverse backgrounds and viewpoints in the resolution of public policy issues.

The need for more effective and successful democratic engagement is clearly seen in the paralysis and acrimony in our state and national governments and violence worldwide. Through research, teaching, fellowships/internships and public events, students and the wider public learn about the range of deep beliefs and values which drive human social behavior. Along with acquiring expertise in democratic engagement, this knowledge is essential in helping diverse stakeholders achieve productive and enduring resolutions to pressing issues facing societies today.

History

The Center was founded by the Cal Class of '68 to explore the legacy and advance the aspirations that characterize the spirit of the Class and their time at Cal. It is an exciting innovation in UC Berkeley alumni participation and relations with the University. Professor Bruce E. Cain, who served as Co-Director with Dean Henry Brady during the inaugural years, is now a member of the Center's Advisory Board.

Programs

Today, under the leadership of Faculty Director Henry E. Brady, Program Director Larry A. Rosenthal, Senior Fellow Robert B. Reich and the Board, the Center sponsors programs and events on the UC Berkeley campus and beyond, including:

- **Research** into understanding the political, ideological and cultural factors that generate conflict and what enables productive problem solving locally, nationally and globally.
- **Teaching** based on the research that equips students with techniques for dealing with conflict and skills in collaborative leadership and consensus building.
- **Fellowships** and Internships for Goldman School undergraduate and graduate students' public policy projects and for UC Washington Center students from Berkeley.
- **Public Events** featuring prominent speakers on topics related to civility and democratic engagement and broadly communicating research results to the public and the media.

Please visit our website to learn more about the Center

<http://gspp.berkeley.edu/ccde>

To make a donation to the Center please visit <http://gspp.berkeley.edu/centers/ccde/support-the-center> or call (510) 643-1674 for more information.

To receive the **Class of '68 Gathering Information** and/or to subscribe to the **Goldman School's monthly e-digest**, visit <http://gspp.berkeley.edu/edigest>.